

COMMANDbatch™

Batch with Speed and Accuracy

Precision for Faster Deliveries

Concrete that is batched accurately can leave the plant sooner, making the delivery process safer and speeding up placement, resulting in a quality finished product. Consistently delivering with both speed and quality is the key to return business and a growing customer base.

Empower Yourself Through Batching

COMMANDbatch is fully customizable, with the ability to change 100% of the settings in real-time. No need to fumble with confusing text files or rebooting the system. Nothing but real-time control for you to maximize production. Fast Batch Technology is more than queueing tickets – what if you could run multiple loads at the same time, adjust the mix before starting, and change all settings on-the-fly, all from the same screen?

COMMANDbatch saved us money, helped us optimize our time, and brought many other benefits to our company.

– Novamix



25%+ Reduction in Load Time



100% Customizable Software



Unmatched Batching Accuracy



Maximized Material Savings

Don't just batch concrete, master it with COMMANDbatch™. Learn more today!

**sales@commandalkon.com
1-800-624-1872**

www.commandalkon.com

COMMANDbatch™

Capture True Profitability

Track weights, inventory, round trip times, and man hours to provide a true picture of profitability and success that allows you to push your operations to the next level.

A Leader in the Industry

Recognized worldwide for helping producers achieve operational efficiency, quality, time savings, and profitability based on their specific needs. The accuracy and speed of COMMANDbatch ensures superior quality and delivers material and time savings that are unmatched by any other system.

A Partner You Can Trust

Command Alkon's implementation and support professionals are focused on your success every step of the way – through each phase of implementation and in supporting your daily needs. We understand the keys to success in the industry and are committed to ensuring your return on investment and equipping your business to grow.

COMMANDbatch greatly improved our administrative control, and once automated, our production process saw great results in a short amount of time.

– Fortaleza

Key Takeaways

- ✓ **Seamless Integration** – Connects with dispatch and quality control for a unified workflow.
- ✓ **Real-Time Adjustments** – Modify moisture, temperature, and water settings on-the-fly.
- ✓ **Increased Productivity** – Minimize delays and streamline operations with advanced automation.
- ✓ **Reduced Waste** – Precision batching helps lower material waste and costs.
- ✓ **Instant Data Access** – Get real-time insights for smarter decision-making.

Bringing Together People and Technology to Advance the Heavy Building Materials Industry

COMMANDbatch™

COMMANDbatch ensures precise concrete batching, improving production speed, reducing material waste, and consistently delivering high-quality results. Its advanced features streamline workflows and provide the accuracy needed to meet demanding schedules and project requirements.

Automatic Plant Control

- Conveyor Manual Start/Stop Switch
- Conveyor Discharge Interlock
- Aggregate Scale Automatic Vibrator Control
- Cement Scale Automatic Vibrator Control
- Automatic Conveyor Control (1)
- Air Compressor (1)
- Cement Automatic Aerations (2 for RM100, 3 for RM200)*

Hardware

- Desktop Computer
- Keyboard
- Mouse
- UPS Battery Backup
- LCD Flat Screen Monitor (1 for RM100, 2 for RM200)*
- E-Z Cal Manual Station and J-Box

Standard Software Features

- Freewheel Batching: Start up to 5 loads.
- Continuous Batching and Continuous Discharge: Run the same load continuously.
- Multi-Batch Control: Corrects error on next batch and jogs on last batch.
- Over and Under Tolerance Interlocks: Notification when materials weigh-up out-of-tolerance depending on load size.
- Scale Zero and Bottle Empty Interlocks: Ensures scales and bottles are empty
- Scale Rate of Discharge: Settings for flow adjustment calculations.

Material	Model RM100*	Model RM200*
Aggregates	4	6
Cements	2	3
Water (Metered)	2	2
Admixes (Metered)	4 of 6	4 of 8

Standard Software Features Continued

- Scale Flow Control Dampening: Precise feed cutoff calculations and drop determinations.
- Scale Motion Detection: Ensure stable reading for recording tares and batch weights.
- Automatic Scale Tolerance Checking: Notifies you if scales are not considered empty.
- Automatic Bin Switching: Switches to alternate bin without operator intervention.
- Automatic Bin/Silo Vibrator Control: Set IO point and min flow rate for automatic vibrator start.
- Ice Correction: System makes the necessary corrections to the water target to compensate for the ICE.
- Notification Audible Alerts: Alerts for low inventory and batching/non-batching errors.
- Low Inventory: can be used to prevent Load Start and low inventory message provides options at batch start.
- On Hand Inventory Available at a Glance: View inventory levels of materials at any time.
- Mix Design Integrity Check: Check W/C ratio, yield, material target limits against the system parameters prior to starting a batch.
- Manual Material Monitor Report: Report shows amounts manually fed.
- Alarms Reporting: Log of all alarm notification messages including production and tolerance errors, silent alarms, user log in and out times.
- Batch Weights Printing: Select items to print; enable/disable batch weights printing.
- Slump Tables: Set amount of water added subtracted per slump increment.
- Truck Charge Rate Adjustable on-the-Fly: Adjust truck charge rate during a batch.

- Admix and Admix Design Trims: Automatically trim admixes/admix designs at batch time.
- SMS (Soft Manual Station) – Control manual feeding at remote plant.
- Allowable Water Feature: Increase amount of water that can be added at the job.
- Admix and Admix Design Trims: Automatically trim admixes/admix designs at batch time.
- SMS (Soft Manual Station) – Control manual feeding at remote plant.
- Allowable Water Feature: Increase amount of water that can be added at the job.

Administration and Integration

- Auto Archive and Purge: Enable and configure database auto archive and purge.
- User Permissions for Configuration/Editing : Security Groups and individual permissions for forms.
- Remote Diagnostics and Troubleshooting: CAI Service can use Logmein123 or Teamviewer for remote diagnostics and training.
- Shipment and Production Data Export Utilities: extract ticket, batch weights, and performance data in CSV, XLS, XML formats.
- Autoupdater: Automatically and securely download software packages at your convenience.

A La Cart Modules

Enhance your COMMANDbatch system with additional modules and software features to boost efficiency, streamline workflows, and improve batching control. These tools help tailor the system to specific operational needs and maximize performance.

Precision Water System

- Hardware and software work together to ensure load characteristics (slump, workability, yield, etc.) meet batching requirements.
- Specify system-wide default temperatures, and/or specify by individual mix design.

Out-of-Range Temperature Notifications

- Temperature sensors for all types of materials available, or supply your own to meet system specifications.

Post Load Process Manager

- Tracks and records all yard activity after the truck is loaded and before it departs, providing detailed oversight of post-load operations.

Plant Watcher

- Sends email alerts for out-of-tolerance conditions, material changes, or mix updates, ensuring proactive plant management.

Order Entry

- Create projects, orders, and tickets Configure ticket formats with barcodes and print tickets or detailed reports for documentation.

Moisture Probe Support

- Assign probes to bins and monitor readings in Batch Setup for better moisture control.

Multi-Plant and Company Support

- Supports client/server setups for multi-plant operations, enabling multiple companies to batch from the same plant while maintaining separate usage records.

Quickbooks Interface

- Export tickets to XML and import them into QuickBooks for streamlined financial tracking. Compatible with QuickBooks Desktop versions only.

Mixer Controls

- Load Meter Display: Displays slump measurements for better load monitoring.
- Temper Water Controls: Manages water addition for central mix plants.
- Wet/Dry Plant Controls: Supports dual-loading alley plant operations.

Miscellaneous Plant Controls

- Dust collector management.
- Aeration blower and telescopic boot operation.
- Additional plant-specific controls to enhance operational flexibility.

Remote Batching

With Remote Batching, lower volume plants can be operated safely, reliably, and cost-effectively from a different location at any time. Once a truck is in position, the remote batcher can load the truck then shut the plant back down.

Features

- Soft Manual Station (SMS) controls allow for the operation of bins and hoppers, as well as for manual controls such as the air compressor, boot up/down, washout water, etc., from a remote location with the click of a mouse.
- The Driver Authorization Box is standard with the Remote Batching configuration to tell the COMMANDbatch software when a remotely batched load is authorized by the driver for discharge.
- Remote Client allows up to three additional remote users to access one system at the same time so that plant monitoring, tune up, mix design management, diagnostics, and troubleshooting are possible anywhere, at any time.
- Remote Client users can perform tasks without interfering with normal operation.
- Master records can be created, updated, or deleted for customers, mixes, other products, pricing, orders, etc.
- Plant automation can be modified including bin tuning, discharge tuning, and device sequencing/material blending.
- Use built-in tools such as Weigh-Up or Discharge Diagnostics, Sequence Tracer, Custom Equation Monitor, or Ticket Format Helper for troubleshooting.



Order Entry

The Standalone Order Entry module is used to maintain information about planned deliveries. It allows users to create orders and to create tickets from those orders. An "Order Index" is provided on the left side of the orders form so that the operator can decide which orders to process next.

Features

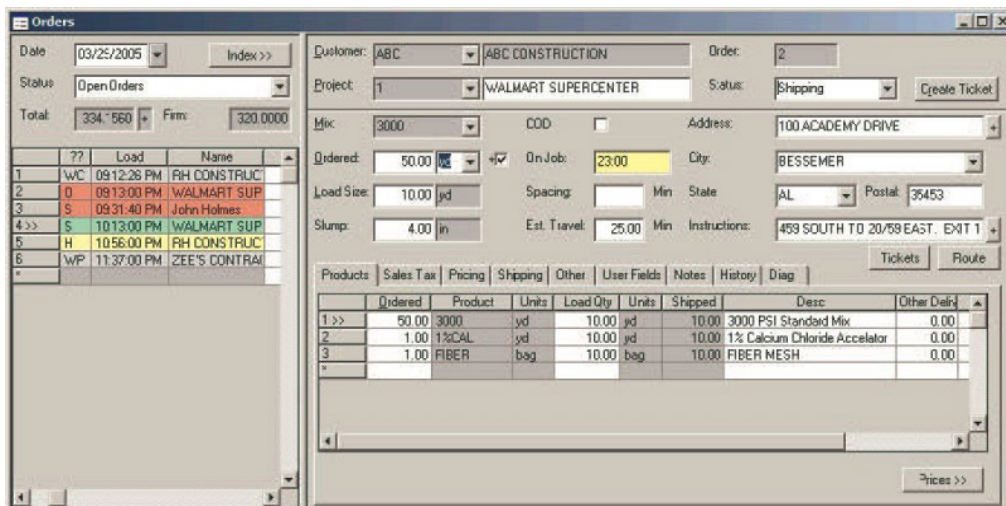
- Quick Tickets can be created for immediate printing.
- Tickets can be scheduled in advance and stacked for later printing.
- Tickets for non-batch products can be created and printed.
- Truck and Truck Type can be preselected to save time.
- Spacing between deliveries can be set on the order.
- Delivery Instructions can be entered on the order and printed on the ticket.
- Target weights can be calculated and displayed on the Batch Setup form and printed if required.
- Authorized users can edit and print tickets.
- Order Entry reports can be generated.
- Price Manager to adjust prices globally.

Implementation

- High-speed Internet is required for remote implementation and support.
- The delivery ticket must be supplied before the remote implementation so that it can be configured before delivery of the system.

Remote Implementation

- Standalone Order Entry installation with the PC and 9-Pin Dot Matrix Printer in the same room.
- The printer will be set up for a Parallel Port USB Ticket Export using the COMMANDbatch standard export configuration
- Remote implementation/configuration/training hours (including ticket format design/creation).



Ordered	Product	Units	Load Qty	Units	Shipped	Desc	Other Dain
1.00	3000	yd	10.00	yd	10.00	3000 PSI Standard Mix	0.00
1.00	1%CAL	yd	10.00	yd	10.00	1% Calcium Chloride Accelerator	0.00
1.00	FIBER	bag	10.00	bag	10.00	FIBER MESH	0.00

Automatic Bin Fill

Efficiently transfer materials from underground to overhead bins with automatic monitoring and replenishment for up to six bins. Priority-first replenishment, manual overrides, alarms, and an emergency stop ensure safe operation.

Features

- Gap (Fast) mode optimizes bin loading for plants with long conveyors.
- Contamination monitoring.
- Skip bin filling.
- Alternate ground bin sources (gates).
- Priority bin filling with minimum fill times.
- Emergency high bin level monitoring.
- Maintenance mode for manual operation or winter maintenance.
- Customization options for complex material handling systems.
- Integration with remote manual control panels, available as an add-on.

Remote Implementation

- Standalone Order Entry installation with the PC and 9-Pin Dot Matrix Printer in the same room.
- The printer will be set up for a Parallel Port USB Ticket Export using the COMMANDbatch standard export configuration.
- Remote implementation/configuration/training hours (including ticket format design/creation).

Benefits

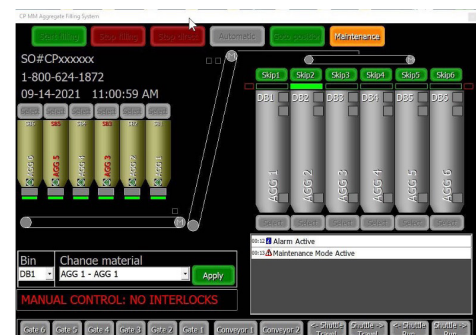
- Automates bin replenishment, allowing staff to focus on more critical plant operations.
- “Keep Full” functionality ensures batch plant bins remain filled, preventing production delays.

System Capabilities

- Determine the need for a specific material.
- Rotate the turnhead or shuttle conveyor to the correct position.
- Activate feed belts as needed.
- Open the appropriate feed gate on the underground storage silo.
- Monitor the process until the bin is fully replenished.

As the system sequences from one material to the next, the Automatic Bin Fill system will:

- Close the gate in use on the underground storage.
- Calculate the turnhead positioning delay.
- Open the feed gate for the next material while ensuring proper belt delays to prevent crosscontamination of materials in bins.



Laser Ticket Printing

Enhance your delivery ticket quality with a fully customizable digital format specifically designed for laser ticket printing, allowing you to produce professional, high-resolution tickets that can be tailored to meet your business and customer needs.

Quality and Flexibility

- High-resolution print quality for professional looking tickets: Ensure that every ticket is sharp and legible, delivering a polished, professional appearance that enhances your brand's credibility.
- Eliminates the need for standard print shop templates. Avoid the limitations of generic templates by creating tickets tailored to your operational and customer requirements.
- Easily modified and customized to fit your needs: Adapt ticket designs effortlessly, making updates or changes to align with evolving business demands without the need for external support.

Reprints and Exports

- Full-view ticket reprints for accurate documentation: Easily generate duplicate copies of tickets for auditing, customer inquiries, or recordkeeping without compromising accuracy.
- Complete laser ticket exports for streamlined processing: Export ticket data seamlessly, enabling integration with other systems and reducing manual entry errors.

Low-Maintenance Printing

- Print tickets and reports using a single printer: Consolidate printing into one reliable device, reducing complexity and cutting equipment costs.

Benefits

- Reduces waste with efficient printing: Print only what's necessary to save costs and support sustainability.
- Low-maintenance solution for consistent ticket production: Dependable system requires minimal upkeep for uninterrupted ticketing.
- Front/back page printing options for added versatility: Duplex printing maximizes space with additional info or disclaimers.
- Includes pre-printed disclaimers for convenience: Save time and ensure compliance by integrating disclaimers into ticket design.

Benefits

- Printer must support duplex printing for optimal functionality: Ensure your printer is equipped to handle front and back printing, maximizing efficiency and ticket format option.



Post Load Process Manager

Efficiently move materials from underground storage to overhead bins, with controls for automatic monitoring and replenishment of up to six bins. Priority-first replenishment, manual overrides, and safety features like alarm indicators and an emergency stop button ensure reliable operation.

Operation

- Allows users to select the applicable post-load location via a button on the PLPM User Interface, supporting multiple locations.
- Supports up to ten simultaneous users accessing the PLPM application.
- Mobile devices for PLPM must be on the same network as the COMMANDbatch PC.
- Automatically removes loads from the interface after a user-defined time, defaulting to 30 minutes.
- Loads can also be removed manually by marking them 'Complete' in the current view or 'Done' in the history view.
- Smart PLPM can be configured to interlock material feed controls, enhancing operational efficiency.
- Optional output for Smart PLPM provides power to an entire slump stand station for streamlined material management.

Implementation

- PLPM installs automatically with COMMANDbatch, requiring no extra software.

System Requirements

- PrCOMMANDbatch Version 2016.3.4 (1.9.3.4) or later.
- Google Chrome™ is required to operate PLPM.

Benefits

- Reduces waste with efficient printing: Minimize material usage by printing only what is necessary, contributing to cost savings and environmental sustainability.
- Low-maintenance solution for consistent ticket production: Simplify operations with a dependable system that requires minimal upkeep and ensures uninterrupted ticketing.
- Front/back page printing options for added versatility: Utilize duplex printing to include additional information or disclaimers on the back of tickets, maximizing space and utility.
- Includes pre-printed disclaimers for convenience: Save time by incorporating disclaimers directly into your ticket design, ensuring compliance and reducing manual tasks.

Requirements

- Printer must support duplex printing for optimal functionality: Ensure your printer is equipped to handle front and back printing, maximizing efficiency and ticket format option.

Precision Temperature System

Achieve predictable concrete temperatures at the lowest cost with the COMMANDbatch Precision Temperature System. Estimate final temperatures accurately before batching to eliminate the risk of wasted time in the yard, ensuring consistent quality and efficient operations for every load.

Improve Production

- Specify system-wide default temperatures or customize them by individual mix design.
- Receive notifications for out-of-range temperatures to ensure quality control.
- Utilize temperature sensors for all types of materials, or supply your own to meet system specifications.
- Enhance consistency in production and maintain superior product quality.

Minimize Costs

- Lower costs associated with heating, chilling, ice, or liquid nitrogen.
- Reduce time spent in the yard and on load adjustments, improving operational efficiency.

Avert Risk and Waste

- Consistently meet customer specifications and avoid rejected loads or wasted resources.



Precision Water System (PWS)

The Precision Water System combines hardware and software to ensure load characteristics like slump, workability, and yield are consistently achieved during batching. Paired with COMMANDbatch's material target calculation, the PWS produces higher-quality concrete.

Production and Product Quality

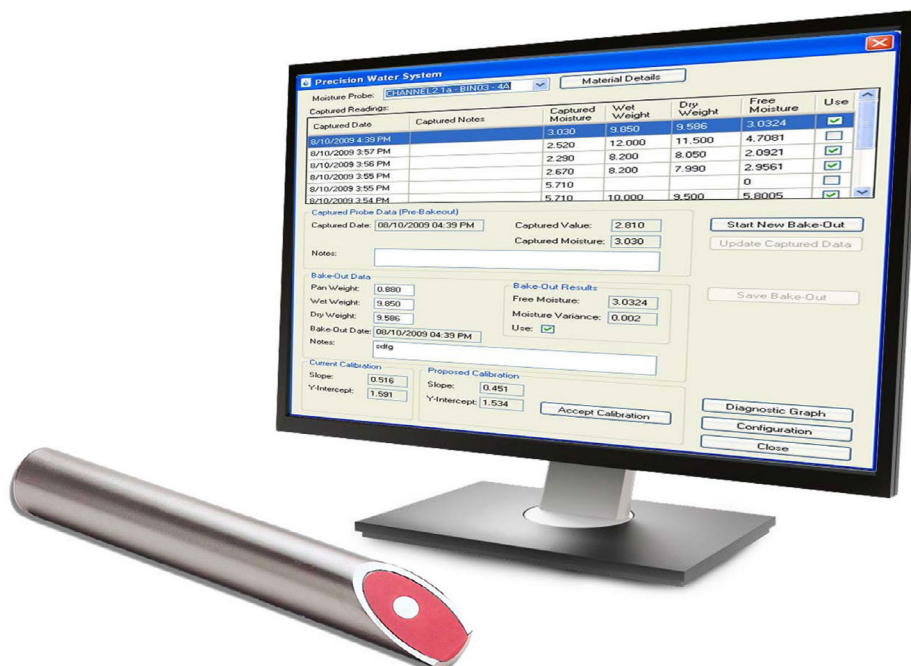
- Produce consistent concrete across multiple plants for uniform results.
- Eliminate variability with wet or dry loads.
- Stabilize key characteristics like strength, finishing effort, bleed water, and set times through consistent water management.
- Supports a variety of materials, including coarse aggregates up to 1 1/2" (multiple probes recommended).

Reduce Manual Processes

- Simplify calibration and bake-out procedures for easy maintenance.
- Maintain up-to-date probe calibrations with regular system use.
- Access historical data with ease for troubleshooting and optimization.
- Lock and load sample mode simplifies sampling processes.
- Reduce yard time and save time on load adjustments.

Avert Risk and Waste

- Minimize rejected loads by ensuring consistency.
- Consistently meet customer specifications to avoid costly issues.



Color Interface

COMMANDbatch integrates with color dispensers to control start and discharge commands. Graphic indicators show system activity on the Batch Graphics form, while errors and alarms are displayed. It automatically adjusts load properties eliminating the need for manual calculations.

Prerequisites

- Use COMMANDbatch version 2018.1.1 or later to integrate your Color System.
- Tested and approved color dispensers for integration:
 - Euclid Chemical Color-Matic G.
 - Sika CHROMIX-It 404 Granular.

Color System Integration Benefits

- Eliminates the need to manually start or discharge the Color System from a separate machine. COMMANDbatch directly controls these functions.
- Automatically adjusts for water used in the color mixing process, integrating it into batch calculations without manual input.
- Provides real-time visibility of the Color System's start and stop functions through Batch Graphics.
- Displays device errors or alarms from the Color System within COMMANDbatch for streamlined troubleshooting.

Color System Tickets

- Integration supports tickets:
 - Received from Ulink.
 - Created in Order Entry.
 - Tickets created on the Batch Setup form cannot include color.

Color System Batch Interactions

- When a color ticket is started: COMMANDbatch instructs the Color System to start and specifies the color mix to use.
- The Color System sends a "ready to discharge" message to COMMANDbatch, including the water amount used in the color process, COMMANDbatch adjusts targets accordingly.
- COMMANDbatch directs the Color System to discharge the color.
- The Color System notifies COMMANDbatch when the discharge is complete.
- COMMANDbatch retrieves the water amounts used during the color process and adjusts actual water usage automatically.
- If another color ticket is queued, it will not start until the current color discharge is complete.